



agriculture & rural development

Department:
agriculture
& rural development
PROVINCE OF KWAZULU-NATAL

Isolezwe, 21 September 2015, Page 15

izindaba

ISOLEZWE,
UMSOMBULUKO, SEPTEMBER 21, 2015

15

Umbango ngohlelo lwepulazi

MLUNGISI GUMEDE

SEKUQUBUKE umbango mayelana nohlelo luka-R136 million lwepulazi likamoba elizoba soBizo eMpangeni lapho amalungu omphakathi esola inkosi uNsikayezwe Cebekhulu ngokuwashaya ngesithende wafaka uzalo lwakhe kuphela kulona.

Imvunge ngesenzo sikaCebekhulu oyilungu le-IFP ePhalamende, ivele emhlanganweni womphakathi oBizo emasontweni amabili edlule lapho bekuyomenyezwe khona amagama abantu abazongena ohlelweni okuthiwa kugcwele abantu bakwaCebekhulu kulona.

Kuthiwa u-90% wabantu abazobamba iqhaza kulolu hlelo bawuzalo lwenkosi.

Uhulumeni uxhase umphakathi wakule ndawo ngalezi zigidi emva kokuba ususwe ngabamhlophe emhlabeni wawo ngo-1913, kwatshalwa umoba.

Ilungu lomphakathi elikhulume

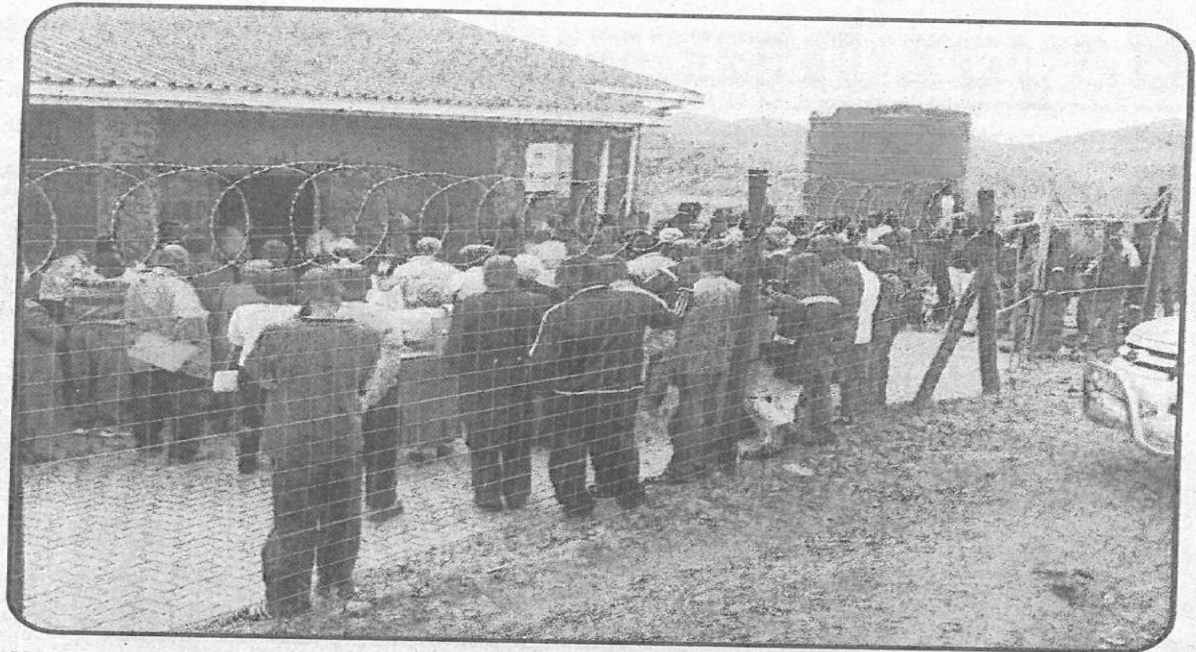
neSolezwe kodwa lacela ukuthi lingadalulwa ngoba lisaba ukuhlukumezeka lithe kunemindeni eminingi emidala endaweni eyayikhona ngesikhathi kususwa abantu kodwa eshiywe ngaphandle.

“Phakathi kwaleyo mindeni emidala kukhona owakwaSabelo nowakwaMjadu kodwa kuzofakwa imindeni emisha esanda kufika,” lisho kanje.

UMnuz Siboniso Mjadu uthe uphatheke kabi ngoba bawumndeni omdala endaweni kodwa bashiywe ngaphandle uma sekukhona uhlelo lwentuthuko omphakathini.

“Umndeni wami udidekile ukuthi usale kanjani ngoba wawukhona ngesikhathi kususwa abantu kutshalwa umoba,” usho kanje.

UMnuz Siphakanyiswa Sabela uthe bazoya kwikhomishini yezokubuyiswa kwemihlaba beyofaka esabo isicelo ngoba le ndawo okukhulunywa ngayo eyabo.



AMALUNGU omphakathi wasoBizo eMpangeni emi ngaphandle kwehholo lomphakathi lapho bekunomhlangano mayelana nohlelo lwepulazi lika-R136 million oselususe umbango

USabela uthe umlando ukhomba ukuthi indawo ngeyabo hhayi abakwaCebekhulu.

“Le ndawo bekungeyakwaQwabe kuphethe uNomo indodakazi kaKhondlo naye eyinikwe yinkosi uDingiswayo ngoba uNomo exabene nomfowabo uPhakathwayo bebanga ubukhosi. ISilo uShaka sacela uNomo ukuba

asikele uMzimba wakwaCebekhulu indawo. Kuthe uNomo esesale empini yaseNcome kwabekwa uMzimba ukuthi abambe ngoba wabe eyindoda ethembekile,” usho kanje.

Iziphendulela inkosi uCebekhulu ithe iyadumala ngoba uhlelo alukaqali ngisho ukuqala kodwa sekukhona abantu asebekhala.

“Ngasho emhlanganweni ukuthi kusenemindeni engazange ibhaliswe okumele ingene ohlelweni. La bantu abakhalayo bekumele beze kimina nekomiti kuxoxwe hhayi ukuthi bagijime baye emaphepheni,” usho kanje.

UCebekhulu uthe kuyinhlamba ukuthi ushaya umphakathi ngesithende ngoba efuna kungene uzalo lwakhe kuphela.