

CONFIDENTIALITY

If an official representative of the CEC cannot attend a meeting, written approval needs to be obtained from the Chairperson of the CEC for a nominated substitute to attend that specific meeting. Partial attendees, or substitutes not cleared with the necessary confidentiality agreement in place, must leave the venue before actual deliberations on the estimates start.

The following regulations must be observed, viz,;

1. A member of the Crop Estimates Committee will discuss detail information or survey information of individual collaborators only with members of the Crop Estimates Committee who are involved in the meetings (including the Chairperson, representatives of the DoA, PDAs, National Agricultural Marketing Council, various ARC-Institutes and Statistics SA).
2. A member of the Crop Estimates Committee will discuss detail information of individual collaborators only with parties directly involved if authorised by the Chairperson.
3. It is only the Chairperson, or a member appointed by the Chairperson, who may speak to representatives of the media.
4. It is only the Chairperson who is authorised to discuss crop estimates information with anyone other than a member of the Committee.
5. A member of the Crop Estimates Committee may furnish published information only as from 14:30 on the date of the relevant meeting to anyone.

FOR FURTHER INFORMATION, CONTACT:

Agricultural Risk & Disaster Management:
Agricultural Economist G.S Muller
Department of Agriculture and Rural Development

Private Bag X9059, Pietermaritzburg, 3200
Tel: 033 355 9628
Fax: 033 355 9401
Email: garrett.muller@kzndard.gov.za
WEBSITE: www.kzndard.gov.za

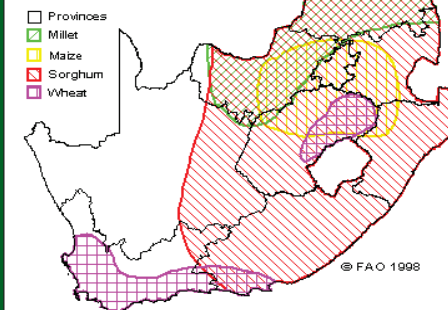


agriculture
& rural development

Department:
Agriculture and Rural Development
PROVINCE OF KWAZULU-NATAL



Main Crop Zones of SOUTH AFRICA



The general aim of the Crop Estimates Committee (CEC) is provide an official estimate of crop production and reserves in the country for the government to make strategic decisions on imports for ensuring food security in the country.

The committee is to build up of a network of contacts that can provide inputs at regular intervals on commercially produced crops throughout the RSA, it is essential to have representatives with knowledge of and contact with commercial agriculture to meaningfully participate in the discussions during the CEC meetings.

CROP ESTIMATES

THE COMMITTEE

DAFF is the lead agent. No party with vested interests serves on the CEC. Members or officials of the following institutions constitute the Committee:

- DoA
- A representative from each of the nine Provincial Departments of Agriculture (PDAs)
- Institutes of the Agricultural Research Council (ARC):
 - Grain Crops Institute (ARC – GCI) - Potchefstroom
 - Institute for Soil, Climate and Water (ARC – ISCW) - Pretoria
 - Small Grains Institute (ARC – SGI) - Bethlehem
- Stats SA
- National Agricultural Marketing Council (NAMC)

Members have to submit their individual estimates to the DoA (Secretariat) the morning, before 08:00, prior the CEC-meeting, where applicable.

The Committee estimates the commercial crop on a provincial basis during the relevant planting season (winter or summer) and includes the following:

- Area planted (hectares)
- Crop (Tons or t/ha), including the following:
 - (a) to be delivered for storing purposes,
 - (b) to be sold to co-operatives, millers, feedlots, poultry farms, dairy farms, direct exports and/or to fellow farmers, etc.
 - (c) retentions on the farm for own use (human and animal consumption, seed).

The Committee estimates the non-commercial crop (developing agriculture) at the beginning of the season, including the following:

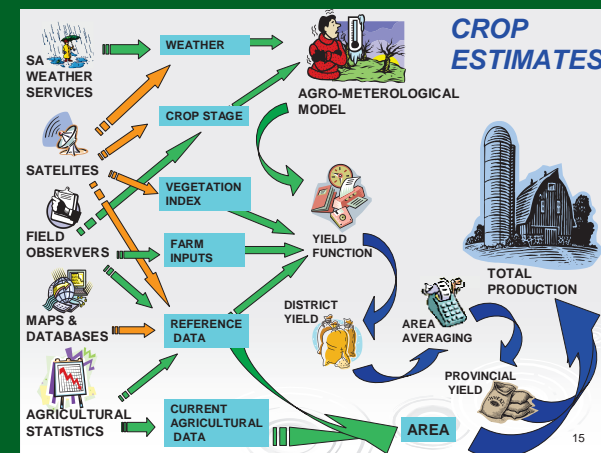
- (a) the communal rural areas - mainly for own use and not to be delivered or sold in the commercial market

PROVINCIAL DEPARTMENTS OF AGRICULTURE

The PDAs add quantitative value to the estimates, i.e. they provide a clear indication of production conditions in the province.

The following are considered by each representative when familiarizing themselves with production conditions in a province:

- A general overview of crop conditions in the province, i.e. how does it compare to the previous season? This information can be obtained by means of the following:
 - Driving through the production areas (in the relevant province) and observing crop conditions, i.e. plant progress, plant phenological stages, impact of weather on crops, any unusual situation, etc. before attending the CEC meetings;
 - Contacting extension officers/knowledgeable persons/larger producers;
 - Contacting agri-businesses (former co-operatives); and
 - Contacting seed and fertilizer companies.
- Awareness of weather conditions;
- Evaluating the various data inputs provided by roleplayers to the CEC, using information gathered from above mentioned.
- Lead the discussions and provide guidance in setting an estimate for a province.



A disaster is not measured by the event that can cause damage; instead, a disaster is the measure of damage caused by an event.